



Anbalaba

PROPERTIES AND VILLAGE
BAIE DU CAP - MAURITIUS



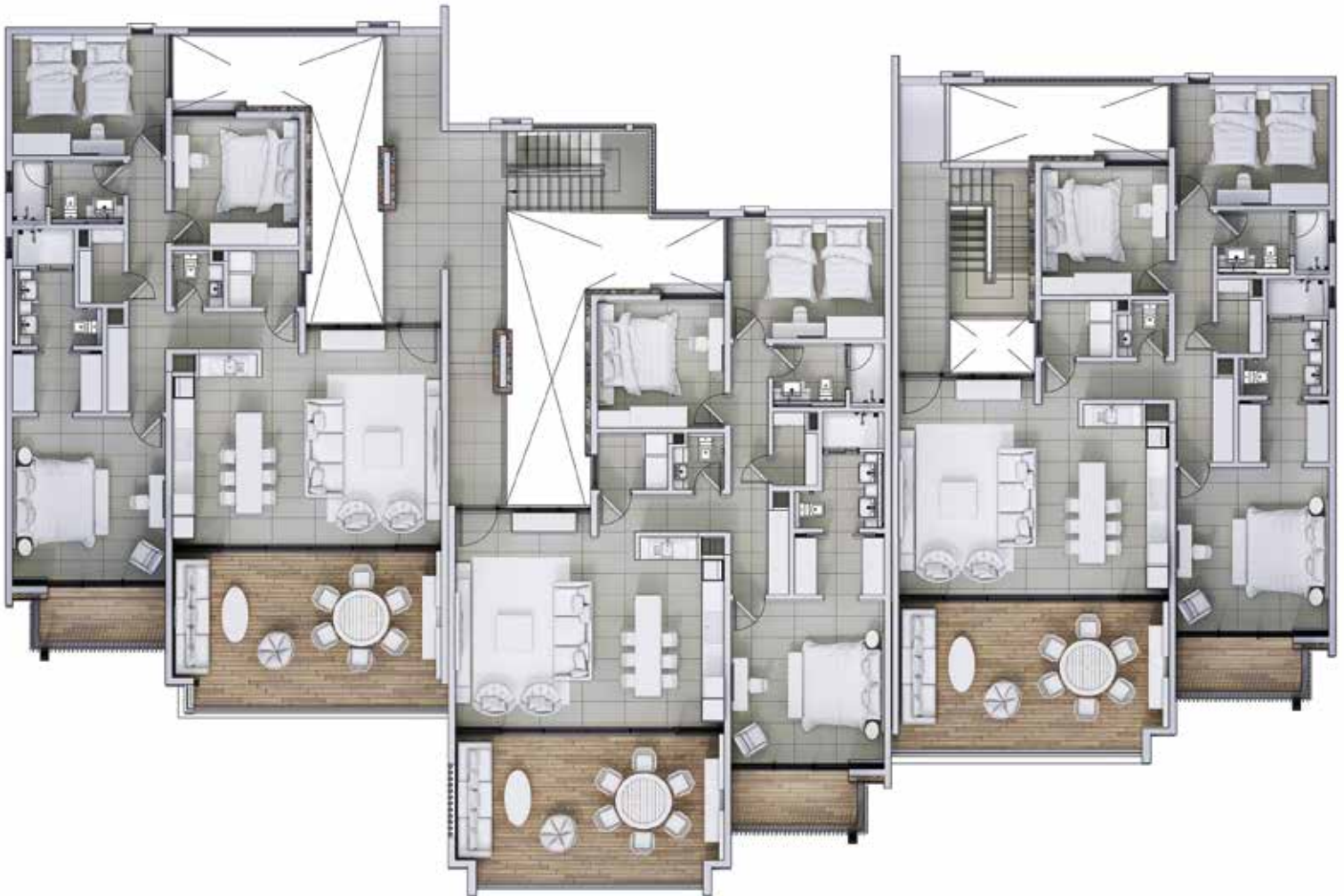
LES VUES
D'Anbalaba

FIRST FLOOR



APARTMENTS at a glance

- Panoramic views over the coral reef
- 170 m² of living space
- 3 bedrooms – 2 bathrooms
- Master suite with private balcony
- Terraces
- 460 meters from the lagoon
- 160 meters from Anbalaba Village
- A stand-up paddle reserved for each purchaser
- Starting price: € 580,000



ANBALABA - IRS PROPERTIES AND VILLAGE - BAIE DU CAP - MAURITIUS - JULY 2017

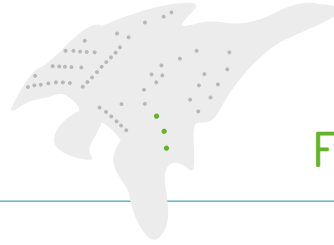
www.anbalaba.com contact@anbalaba.com

+230 622 11 39 +33 156 02 03 13



Anbalaba

PROPERTIES AND VILLAGE
BAIE DU CAP - MAURITIUS



LES VUES D'Anbalaba

FIRST FLOOR



APARTMENT FIRST FLOOR		Area (m ²)
1	Living Room	24,6
2	Open Kitchen	19,0
3	Terrace	33,3
4	Laundry	3,2
5	Powder Room	2,2
6	Master Bedroom	32,0
7	Wardrobe & Ensuite	
8	Master Bedroom	5,5
9	Bedroom 1	15,0
10	Bedroom 2	13,0
11	Common Shower Room	5,7
12	Store	2,4
	Corridor	13,1
TOTAL INTERNAL AREA FOR FIRST FLOOR		169,0

ANBALABA - IRS PROPERTIES AND VILLAGE - BAIE DU CAP - MAURITIUS - JULY 2017

www.anbalaba.com contact@anbalaba.com
+230 622 11 39 +33 156 02 03 13

Legal notice: This programme was certified by the Board of Investment on 31st July 2014 under the terms of the Investment Promotion Act of 2000 and the Investment Promotion (Real Estate Development Scheme) Regulations of 2007. The commercial documents used by the Promoter and its representatives for the purposes of marketing Anbalaba's real estate products are artistic illustrations and cannot be considered a contractual offer. The Promoter reserves the right to modify and/or change the contents of any promotional material and/or any aspect of its general offer at any time and without notice, for any reason and at its sole discretion. No undertaking by the Promoter or its representatives, other than those made in writing and signed, shall constitute a binding obligation on the part of the Promoter or its representatives to honour this presumed commitment. The prices indicated are purely indicative and are subject to the prevailing exchange rate.